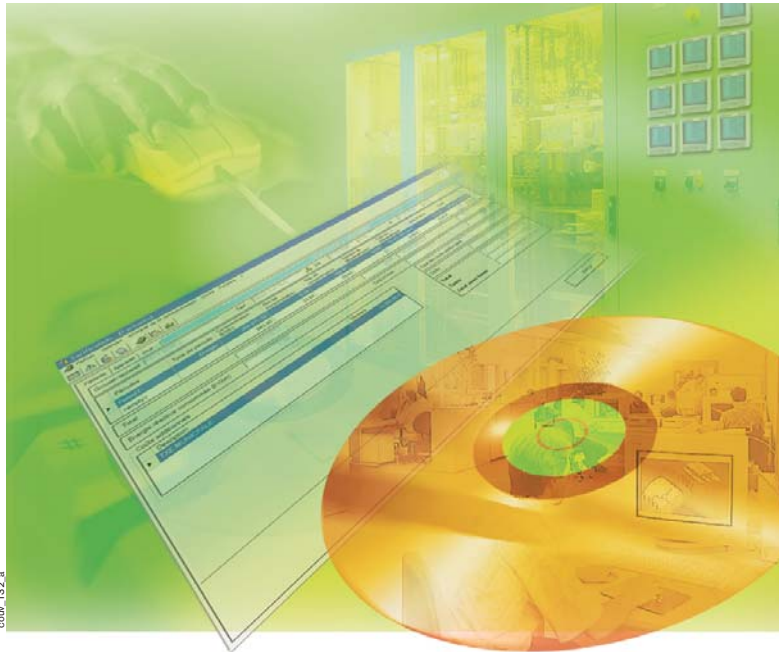


BILLING APPLICATION software

Network analysis

- DIRIS Am
- DIRIS A20
- DIRIS A40 / DIRIS A41
- Communication interfaces
- DIRIS VISION software
- CONTROL VISION software
- ▶ **BILLING APPLICATION software**



Functions

BILLING APPLICATION is a power consumption management software related to tariffs. It allows pricing simulation for agreed supply quota optimisation.

CONTROL VISION is required under a Windows® NT4 or XP environment with a minimal PC requirement: Pentium® III, 512 Mb RAM, 500 Mb of available hard disk space, one or more (RS232 or RS485) series ports, or USB, a 17" VGA 1024 x 768 screen and a **network card with TCP/IP Protocol**.

Access limited by user password.

General characteristics

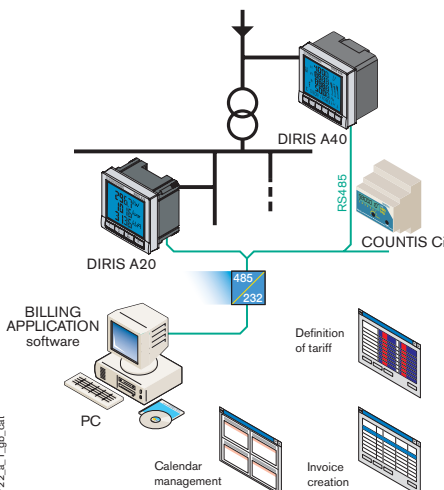
BILLING APPLICATION allows:

- calendar management (bank holidays...),
- price creation (periods, cost, fixed premium,...),
- pricing calculation management,
- device group creation,
- bill edition according to period and consumer,
- load curves visualisation,
- consumption comparison.

The BILLING APPLICATION software is available in a multilingual version comprising the following languages:

- english, - french,
- german, - italian,
- spanish.

Applications



BILLING APPLICATION allows internal billing or pricing simulation to define needs thanks to the information provided from COUNTIS Ci, DIRIS CMv2 or DIRIS A40 (fitted with memory module).

It offers the possibility for consumption optimisation of a production line enabling consumption allocation on manufactured parts.

User can also share power consumption among the different departments in a company or hospital.

User is able to define (thanks to load curves) appropriate pricing to reduce power bill.

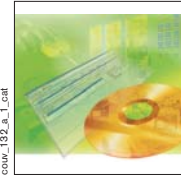
diris_722_a_1_gb_cat



Services +
 > Audit
 > Setting up
 > Training
 See page IV



References



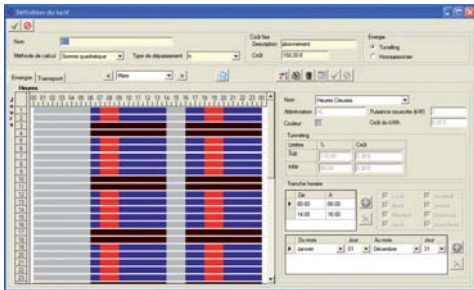
comarc192_a_1_cat

BILLING APPLICATION software

Type	Reference
BILLING APPLICATION software	4805 0002

Specification

Definition of tariff

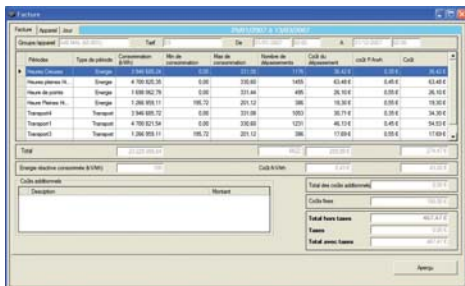


dfis_728_a_1_cat

Tariff definition window for power consumption and transmission:

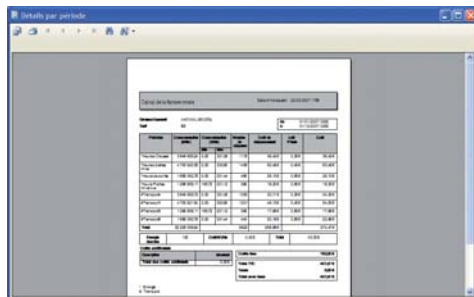
- kWh price definition,
- tariff name,
- calculation method,
- type of overrun,
- additional fixed costs (subscription, service...),
- consumption and transmission periods list,
- seasonal or tunnelling use.

Invoice creation



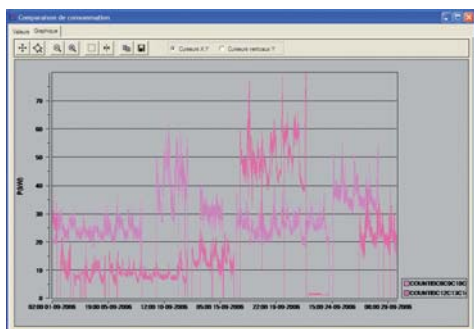
dfis_724_a_1_cat

Print an invoice or export data into EXCEL for one device or a group of products. Software enables user to select tariff and billing period.



dfis_738_a_1_cat

Comparison of 2 load curves



dfis_725_a_1_cat

Visualisation of several devices or device groups for defined period. Table form or curve display.