

## Switchboard Instrument



**ST-96 ST-72**  
**Frequency Meter**

ST-96 and ST-72 Hz instruments are suitable for frequency measurements from AC current networks and can be used in power engineering systems, power plants, switch and test rooms. They can be built in switchboards, measuring desks and electrical equipments.

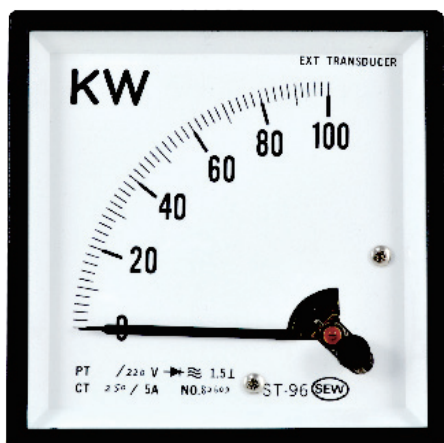
- **Measuring Range :** 45-55 Hz, 45-65 Hz, 55-65 Hz
- **Accuracy :** Class 1.5
- **Working Position :** Vertical.
- **Rated Voltage :** 110V, 220V, 380V, 440V.
- **Limit of Voltage Fluctuation :**  $\pm 20\%$
- **Consumption :** Max. 15mA.
- **Test Voltage :** 2kV, 50-60 Hz
- **Pointer Length :** ST-96 : 55mm  
ST-72 : 38mm
- **Composition :** Glass window, ABS resin frame and case, bakelite base mounting fitting included.
- **Color :** Black base and frame, white scale plate and meter body
- **Pointer :** Stick shape in black color.



**ST-96**  
**Power Factor Meter**

ST-96 COS $\phi$  instruments are used for measuring the power factor of AC single and three phases networks. They are also built primarily in switchboards and electric devices.

- **Measuring Range :** 110V, 220V, 380V, 440V/1A, 5A
- **Accuracy :**  $\pm 5\%$  phase angle
- **Frequency :** 45-65 Hz
- **Test Voltage :** 2kV, 50-60Hz
- **Pointer Length :** 55mm
- **Composition :** Glass window, ABS resin frame and case, bakelite base mounting fitting included.
- **Color :** Black base and frame, white scale plate and meter body
- **Pointer :** Stick shape in black color.



**ST-96 ST-72**  
**Watt Meter**

ST-96 and ST-72 KW instruments are used for measuring the active and reactive power of AC single and three phase networks. They are primarily built in switchboards and electric devices.

- **Measuring Range :** 110V, 220V, 380V, 440V/1A, 5A
- **Accuracy :** Class 1.5
- **Frequency :** 45-65 Hz
- **Test Voltage :** 2kV, 50-60Hz
- **Pointer Length :** ST-96 : 55mm  
ST-72 : 38mm
- **Composition :** Glass window, ABS resin frame and case, bakelite base mounting fitting included.
- **Color :** Black base and frame, white scale plate and meter body
- **Pointer :** Stick shape in black color.
- **Transducer :** External.