



Product designation				Motor protection relay
Product type designation				RF38
General characteristics				
Number of poles	nr.			3
Overvoltage category				III
Pollution degree				3
Frontal IP degree				IP20
Type of release				Thermal
Protection fuse				
	gG (IEC)	A		50 A
	aM (IEC)	A		25 A
	RK5 (UL)	A		90 A
Phase failure detection				NO
Reset mode				Manual or automatic
Power circuit characteristics				
Operating frequency	Operational frequency max	Hz	400 1/s	
Operating current	Operational current min	A	17 A	
	Operational current max	A	23 A	
Tripping class				10A
Test Button				YES
Trip indicator				YES
Terminals	type			Screw and washer
	screw			M4
	tool			Phillips 2
Conductor section	AWG max			8
Auxiliary circuit characteristics				
Auxiliary contacts	NO	nr.	1	
	NC	nr.	1	
Operating current AC15	24V	A	3 A	
	120V	A	3 A	
	240V	A	1.5 A	
	380V	A	0.95 A	
	480V	A	0.75 A	
	500V	A	0.72 A	
	600V	A	0.6 A	
Operating current DC13				

	125V	A	0.11 A
	600V	A	0.22 A
Conventional free air thermal current I _{th}		A	10 A

Terminals

	type	Screw and washer
	screw	M3,5
	tool	Phillips 2

UL/CSA and IEC/EN 60947-5-1 designation	B600-R300
---	-----------

Ambient conditions

Max altitude	m	3000
--------------	---	------

Mechanical features

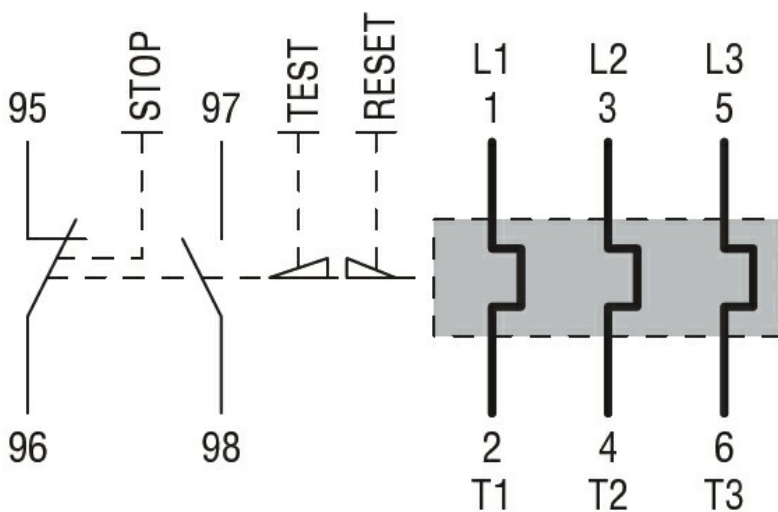
Operating position	normal allowable	Vertical plan ±30°
--------------------	------------------	--------------------

Weight	g	0.16 kg
--------	---	---------

UL technical data

Full-load current (FLA) for three-phase AC motor	at 480V	A	23 A
	at 600V	A	23 A

Wiring diagrams



Certifications and compliance

Compliance	CSA C22.2 n° 14
	IEC/EN 60947-1
	IEC/EN 60947-4-1
	UL508

Certifications	CCC
	cULus
	EAC