



Product designation			Power contactor
Product type designation			BF95
Contact characteristics			
Number of poles	nr.	3	
Rated insulation voltage Ui	V	1000	
Rated impulse withstand voltage Uimp	kV	8	
Operating frequency	Operational frequency min	Hz	25
	Operational frequency max	Hz	400
Conventional free air thermal current Ith	A	140	
Operating current	Operational current AC3 (≤440V ≤55°C)	A	95
	Operational current AC4 (400V)	A	45
Short-time allowable current for 10s (IEC/EN60947-1)	A	760	
Protection fuse	gG (IEC)	A	160
	aM (IEC)	A	100
Making capacity (RMS value)	A	1200	
Breaking capacity at voltage	Breaking capacity 440V	A	1100
	Breaking capacity 500V	A	775
	Breaking capacity 690V	A	745
Resistance per pole (average value)	mΩ	0.45	
Power dissipation per pole (average value)	Power dissipation pole (average value) Ith	W	8.8
	AC3	W	4.1
Tightening torque for terminals	min	Nm	5
	max	Nm	6
	min	lbft	3.7
	max	lbft	4.4
Tightening torque for coil terminal	min	Nm	0.8
	max	Nm	1
	min	lbft	0.59
	max	lbft	0.74
max number of wires simultaneously connectable	nr.	2	
Conductor section			
AWG	min	16	
	max	2	
Flexible w/o lug conductor section			
	min	mm²	1.5
	max	mm²	70
Flexible c/w lug conductor section			

		min	mm ²	1.5
		max	mm ²	70
Power terminal protection according to IEC/EN 60529				IP20 front
Ambient conditions				
Temperature				
	Operating temperature	min	°C	-50
		max	°C	70
	Storage temperature	min	°C	-60
		max	°C	80
Max altitude				m 3,000
Operating position				
		normal		Vertical plan
		allowable		±30°
Mounting				Screw / DIN rail
				35mm
Weight			g	1
Operations				
Mechanical life			Cycles	15,000,000
Electrical life			Cycles	1100000
Safety related data				
Mirror contacts according to IEC/EN 60947-4-1				Yes
EMC compatibility				Yes
AC coil operating				
Rated AC voltage at 50/60Hz, 60Hz				
		min	V	12
		max	V	600
AC operating voltage				
	of 50/60Hz coil powered at 50Hz			
	pick-up	min	%Us	80
		max	%Us	110
	drop-out	min	%Us	20
		max	%Us	55
	of 50/60Hz coil powered at 60Hz			
	pick-up	min	%Us	85
		max	%Us	110
	drop-out	min	%Us	40
		max	%Us	55
	of 60Hz coil powered at 60Hz			
	pick-up	min	%Us	80
		max	%Us	110
	drop-out	min	%Us	20
		max	%Us	55
AC operating voltage				
	of 50/60Hz coil powered at 50Hz			
		in-rush	VA	300
		holding	VA	20

of 50/60Hz coil powered at 60Hz

in-rush	VA	275
holding	VA	17

of 60Hz coil powered at 60Hz

in-rush	VA	300
holding	VA	20

Dissipation at holding $\leq 20^{\circ}\text{C}$ 50Hz

W	6.5
---	-----

DC coil operating

DC rated control voltage

min	V	20
max	V	250

DC operating voltage

pick-up

min	%Us	80
max	%Us	110

Average coil consumption $\leq 20^{\circ}\text{C}$

in-rush	W	65
holding	W	110

Max cycles frequency

Mechanical operations

Cycles/h 3,600

Operating times

Average time for Us control

in AC

Closing NO

min	ms	16
max	ms	32

Opening NO

min	ms	9
max	ms	24

in DC

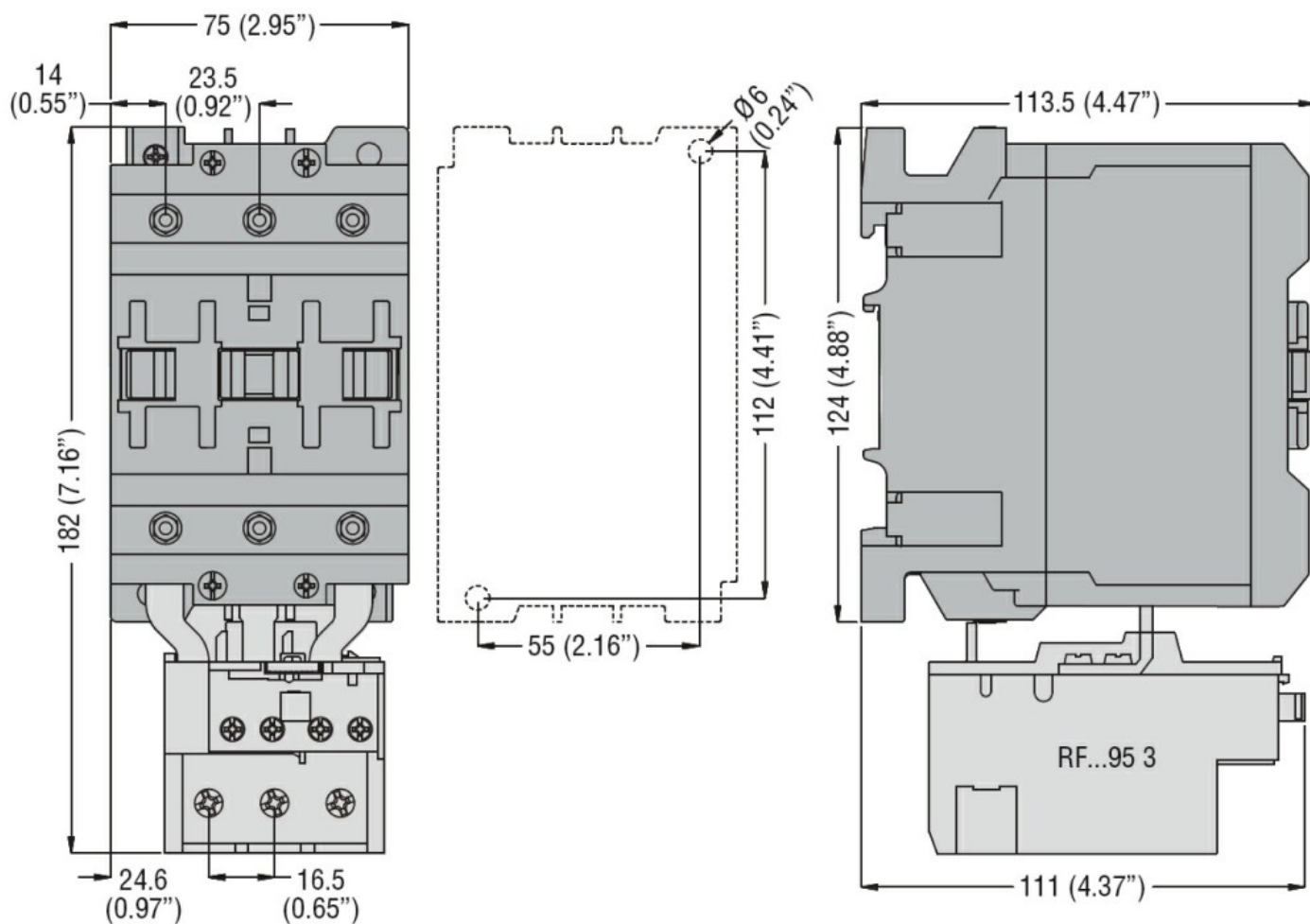
Closing NO

min	ms	45
max	ms	90

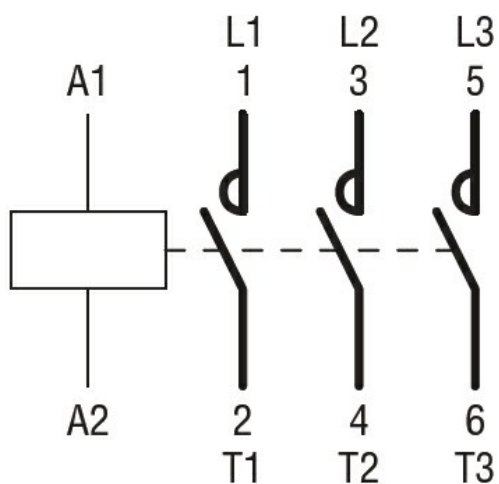
Opening NO

min	ms	24
max	ms	60

Dimensions



Wiring diagrams



Certifications and compliance

Certifications

CSA C22.2 n° 60947-1
CSA C22.2 n° 60947-4-1
IEC/EN 60947-1
IEC/EN 60947-4-1
UL 60947-1
UL 60947-4-1

Compliance

CCC

cULus

EAC

ETIM 6 classification

EC000066 - Power contactor, AC switching