



Product type designation

B145

Contact characteristics

Number of poles	nr.	3
Rated insulation voltage U_i	V	1000
Rated impulse withstand voltage U_{imp}	kV	8
Operating frequency		
	Operational frequency min	Hz 25
	Operational frequency max	Hz 400
Conventional free air thermal current I_{th}	A	250
Operating current		
	Operational current AC3 ($\leq 440V \leq 55^\circ C$)	A 150
	Operational current AC4 (400V)	A 57
Short-time allowable current for 10s (IEC/EN60947-1)	A	1300
Protection fuse		
	gG (IEC)	A 250
	aM (IEC)	A 160
Making capacity (RMS value)	A	1500
Breaking capacity at voltage		
	Breaking capacity 440V	A 1500
	Breaking capacity 500V	A 1400
	Breaking capacity 690V	A 1200
Resistance per pole (average value)	m Ω	0.3
Power dissipation per pole (average value)		
	Power dissipation pole (average value) I_{th}	W 14.5
	AC3	W 6.8
Tightening torque for terminals		
	min	Nm 18
	max	Nm 18
	min	lbft 13.3
	max	lbft 13.3
Tightening torque for coil terminal		
	min	Nm 1
	max	Nm 1
	min	lbft 0.74
	max	lbft 0.74

Ambient conditions

Temperature

Operating temperature

min	$^\circ C$	-50
max	$^\circ C$	70

Storage temperature

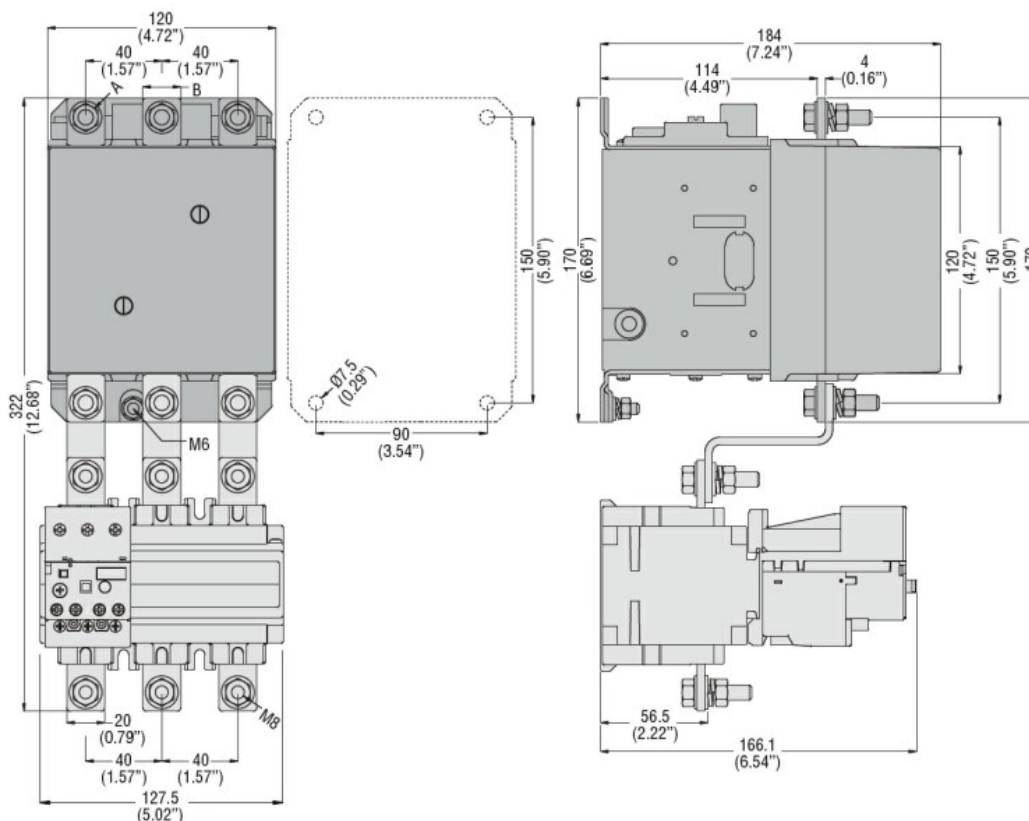
min	$^\circ C$	-60
max	$^\circ C$	80

Max altitude

m 3,000

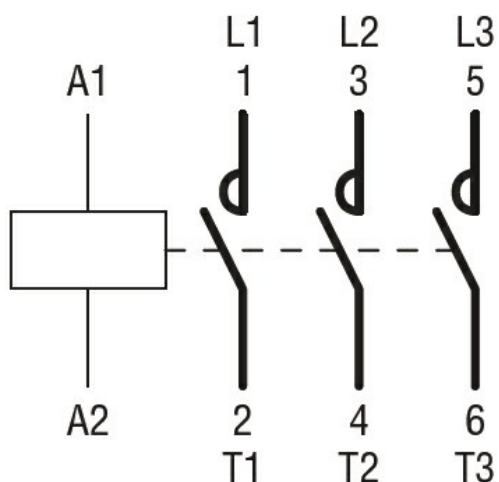
Operating position

	normal allowable	Vertical plan ±30°
Mounting		Screw / DIN rail 35mm
Weight	g	5.4
Operations		
Mechanical life	Cycles	10,000,000
Electrical life	Cycles	1100000
Safety related data		
Mirror contacts according to IEC/EN 60947-4-1		Yes
EMC compatibility		Yes
AC coil operating		
Rated AC voltage at 50/60Hz, 60Hz	min V	24
	max V	480
AC operating voltage		
of 50/60Hz coil powered at 50Hz pick-up	min %Us	80
	max %Us	110
Dissipation at holding ≤20°C 50Hz	W	10
DC coil operating		
DC operating voltage		
Average coil consumption ≤20°C	in-rush W	300
	holding W	10
Max cycles frequency		
Mechanical operations	Cycles/h	3,600
Dimensions		



CONTACTOR TYPE	A	B
B115	M6	15 (0.59")
B145	M8	20 (0.79")
B180	M8	20 (0.79")

Wiring diagrams



Certifications and compliance

Certifications

CSA C22.2 n° 60947-1
CSA C22.2 n° 60947-4-1
IEC/EN 60947-1
IEC/EN 60947-4-1
UL 60947-1
UL 60947-4-1

Compliance

CCC
cULus
EAC

ETIM 6 classification

EC000066 - Power contactor, AC switching